




Annual Report 2018 2019



San Felipe Del Rio C.I.S.D.
Irene Cardwell Head Start




MISSION



The mission of the San Felipe Del Rio CISD Irene Cardwell Head Start and Pre-K Program is to collaborate with families and community service organizations to provide our children and their families with opportunities and support in achieving lifelong growth and change through their individual strengths, needs, and interests.

VISION

The vision for the San Felipe Del Rio CISD Irene Cardwell Head Start and Pre-K Program is to see our families and community members as active participants in the preparation of our students for academic success as we achieve School Readiness goals.



OUR MISSION



This annual report is generated in accordance with Head Start Policy & Regulations for the San Felipe Del Rio CISD Cardwell Head Start and Pre-K Program. A variety of data sources have been utilized to support the information presented in order to provide reasonable public access to information, books, and records of the program's ongoing activity involving the use of authority or funds for which it is responsible.

(Sec. 644. [42 U.S.C. 9839])



Required Content:

1. Total amount of public and private funds received with amount from each source.
2. A summary of budgetary expenditures and proposed budget for the fiscal year.
3. Enrollment
4. Results from most recent review by the Secretary and the financial audit.
5. Percentage of enrolled children that received medical and dental exams.
6. Information about parent involvement activities.
7. Agencies efforts to prepare children for kindergarten.

CONTENT



OFFICE OF HEAD START

An Office of the Administration for Children & Families

The most recent reviews conducted by the ACF have resulted in the following:

- **January 2016 Monitoring Review**
 - **Area - CLASS**
 - The CLASS toll looks at three domains and ten dimensions of teacher child interactions and measures those observed interactions on a seven – point scale. Irene Cardwell met criteria in all areas.
- **March 2016 Monitoring Review**
 - **Area – Environmental Health and Safety**
 - Compliant in all 16 areas – no findings.
- **April 2016 Monitoring Review**
 - **Area – FISCAL & ERSEA (Eligibility, Recruitment, Selection, Enrollment, and Attendance)**
 - No areas of noncompliance, no corrective actions.
- **Fiscal Year 2016-2017 Financial Audit**
 - **Area – SFDRCIDSD Fund 205**
 - There were no financial statement findings required to be reported in accordance with Government Auditing Standards as noted in audit conducted by Belt Harris Pechacek, LLL.



Long Term Program Goals

- Enhance children's language development.
- Enhance the health, mental health and well being of the families and children served by the program.
- Enhance the quality of relationships within families.



In accordance with the most recent Head Start Performance Standards, our School Readiness Goals are appropriate for the age, culture, and language of the children that we serve. Our School Readiness Plan is aligned with the 2015 HSELOF - Head Start Early Learning Framework, our Texas Pre-K Guidelines, and our School Readiness Advisory Committee recommendations. These goals are reflective of the ages of children we serve and are monitored through ongoing assessment and tracking.

School Readiness

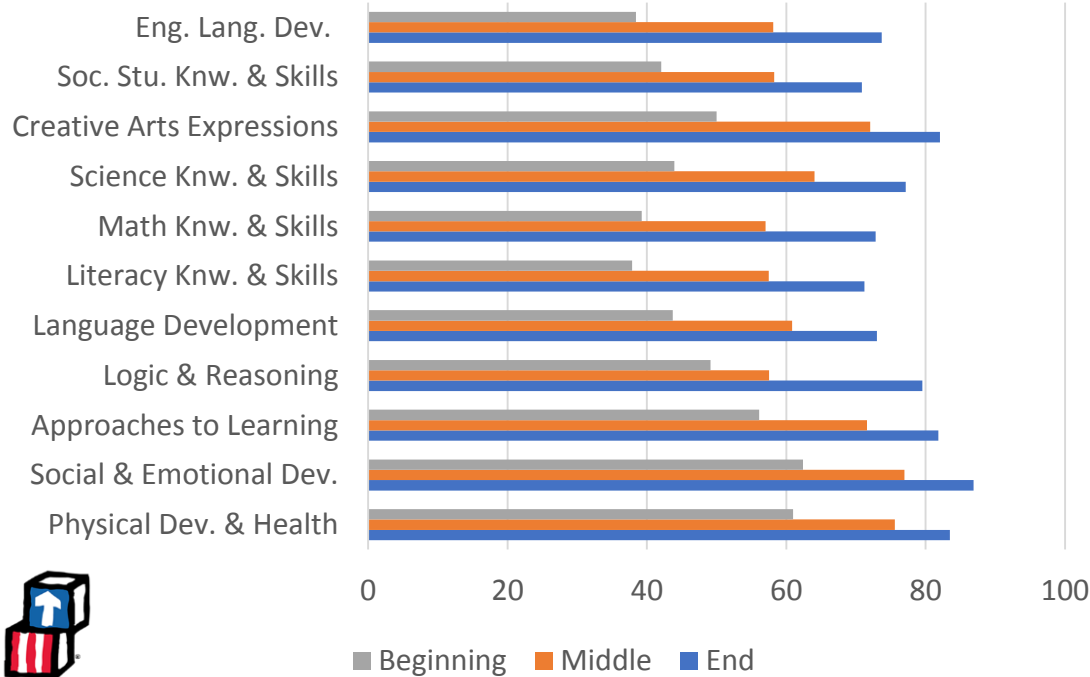
Program staff assure that every student is assessed appropriately within the first 30 days. Within the first 20 days a mental health screener as well as a curriculum designed initial screener are administered. The first formal evaluation is performed within the first 30 days to be able to identify specific targets to implement individualized instruction.

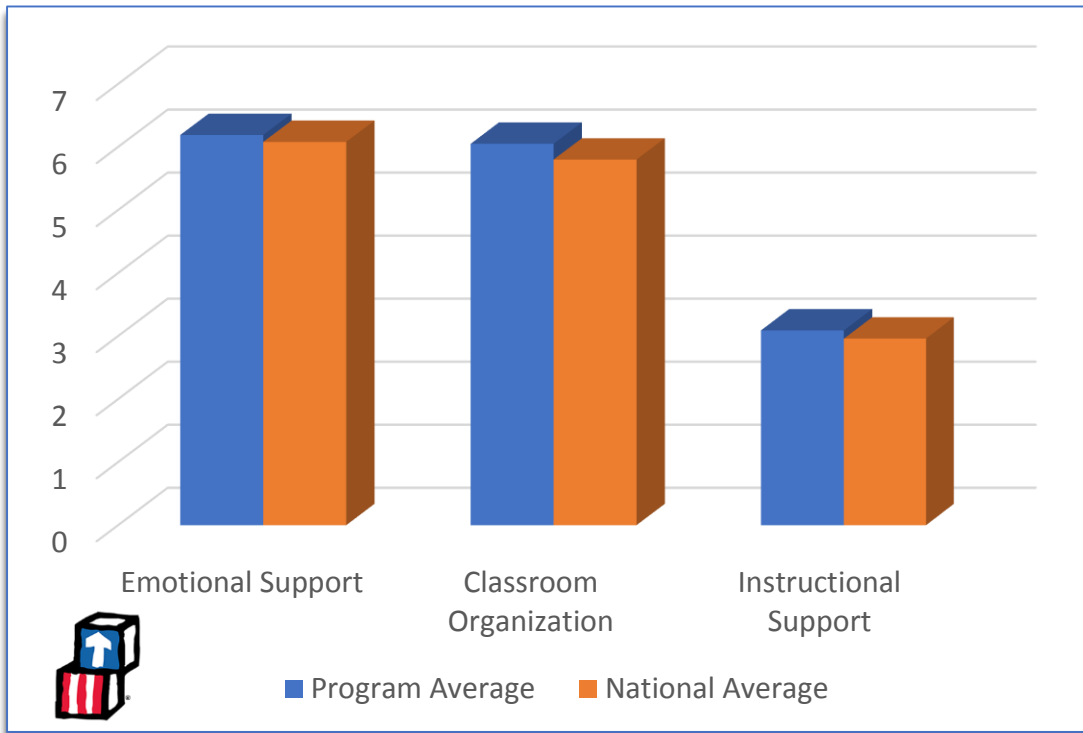
The LAP-3 Assessment is an approved developmental tool that is administered 3 times yearly to identify and inform parents of their child's ongoing progress. The assessment data is utilized for instructional planning and other purposes, such as individualization, specialized instruction, and program goal setting.



Developmental Assessment Data

LAP-3 Program Averages 2018-2019



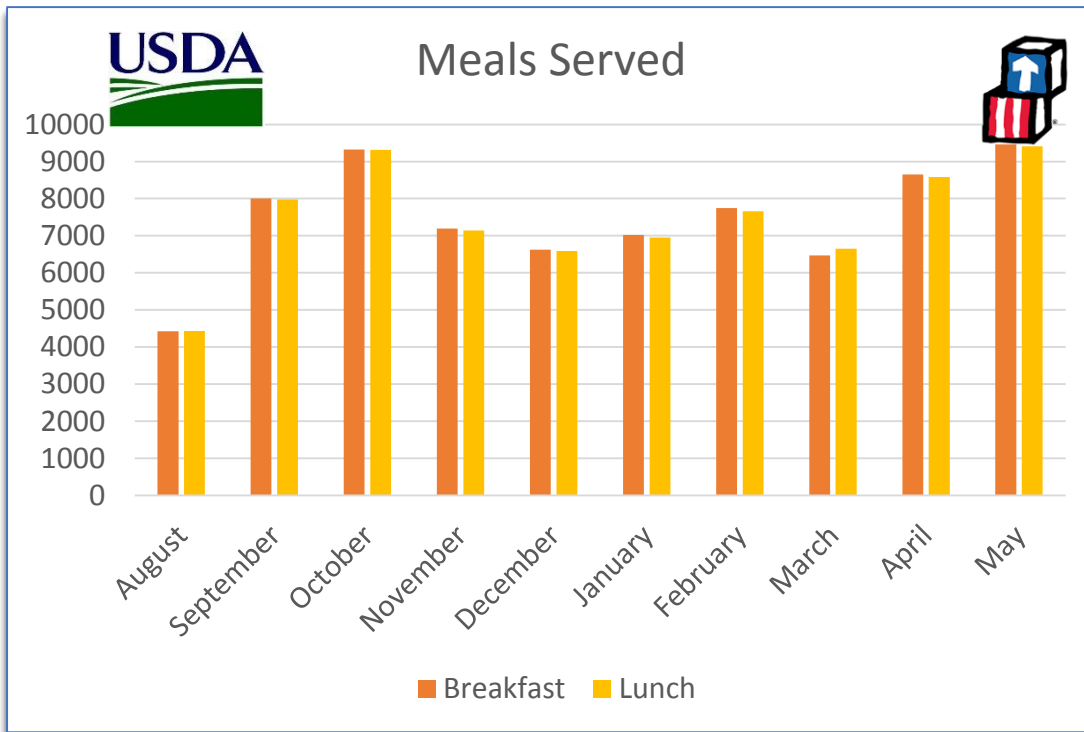


The CLASS instrument (Classroom Learning Assessment) is administered twice a year. Assessment administration includes 2 twenty-minute observation cycles per teacher. This tool is utilized to measure the quality of teacher-child interactions and assists in identifying specific individualized targets for the teacher to focus on for professional development. It focuses on 3 major domains that support high quality practices within the classroom.

ASSESSMENT DATA



San Felipe Del Rio CISD Head Start serves approximately 1000 + family- style meals daily. San Felipe Del Rio Food service provides nutritional balanced meals each day and ensures that all children gain a full understanding of the relationship between proper eating and good health. The goal is to provide our children with nutritious, flavorful, and well-balanced meals.

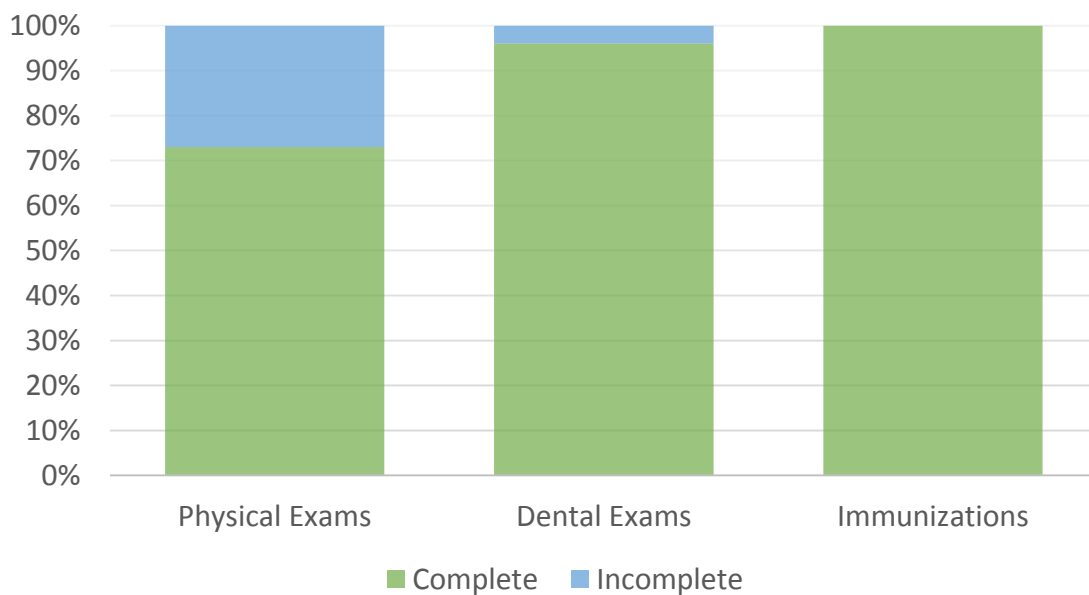


NUTRITION

San Felipe Del Rio Head Start children receive health screenings on site. The health screenings help us determine how to best meet the child's needs. The screenings include: hearing, vision, height, weight, and developmental assessment. On site student trainings for dental hygiene done yearly by HSAC member, Amigo Children's Dental-Dr. Howard Hunt.



STUDENT HEALTH DATA



HEALTH & SAFETY

PRE-K → K

San Felipe Del Rio CISD Head Start prepares children enrolled for the transition to Kindergarten by conducting the following activities:

- ♥ The School Readiness Advisory Committee engages in collaboration with staff for program planning, curriculum revision and vertical alignment to prepare Head Start students for Kindergarten
- ♥ Mental Health Coordinator facilitates a homework activity to encourage parents to discuss transition with their children
- ♥ Mental Health Coordinator hosts a pep-rally with Spinoza the Bear to get children excited about going to Kindergarten
- ♥ Mental Health Coordinator will arrange a bus trip in coordination with the school district to the various elementary schools in town. Students will tour their assigned Kindergarten elementary campus
- ♥ Elementary principals, counselors, and teachers are invited to conduct a Kindergarten orientation for all Head Start and PK parents to coordinate and ensure a smooth transition for students

**MENTAL HEALTH &
DISABILITIES**

**TRANSITION
SERVICES**

- ♥ Annual ARDs will be conducted for special needs students with multiple modifications and an invitation will be given to a representative of the receiving school or the campus diagnostician.
- ♥ A copy of the individualized Education Plan will be included in the cumulative folder for all special needs students.
- ♥ Head Start assessments (including Pre-LAS, LAP-3, DECA, O.W.L Progress Monitoring Assessment, and 9 week monitoring Report Card) are included in the cumulative folder that is transitioned to the child's assigned Kindergarten Elementary campus.
- ♥ Monthly Kinder Readiness trainings offered by Head Start certified teachers engage parents in kindergarten preparedness activities



**MENTAL HEALTH &
DISABILITIES**

**TRANSITION
SERVICES**



Most recent financial audit review of SFDRDCISD Head Start fund 205 in fiscal year ending 2017-2018:

There were no financial statement findings required to be reported in accordance with Government Auditing standards as noted in audit conducted by Belt Harris Pechacek, LLLP.

2018-2019 BUDGET

2018 – 2019 FUNDING SOURCES	AMOUNT
US Department of Health & Human Services	\$2,318,739.00
Private Funds & Donations	\$ 14,888.00

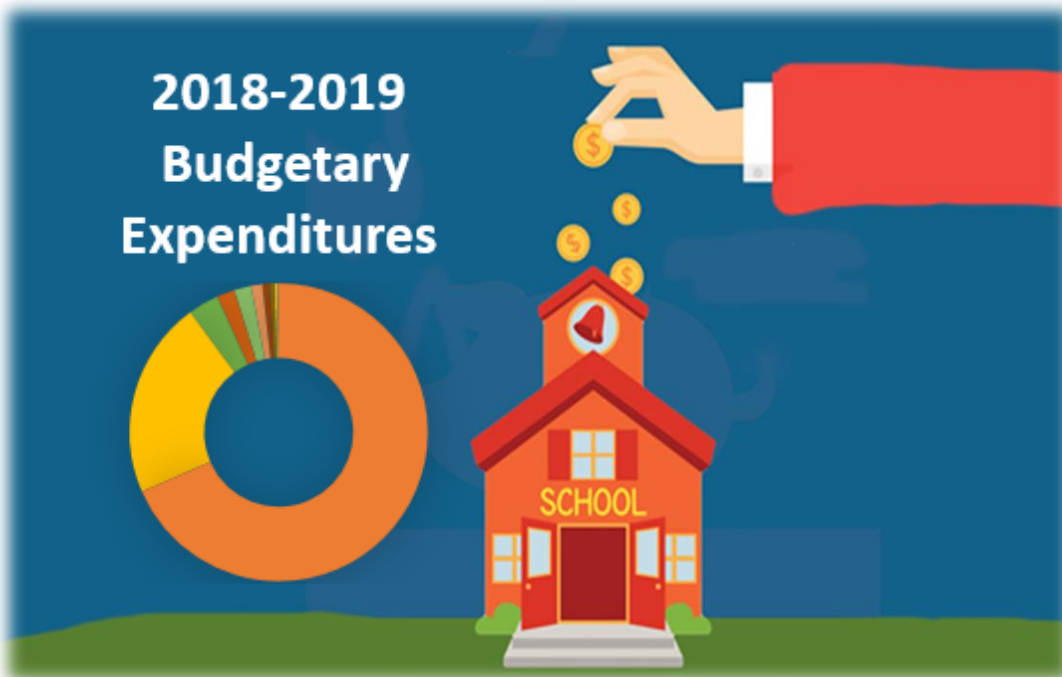
Head Start Categories	Amount \$\$
Salaries	\$ 1,568,595.00
Fringe	\$ 478,788.00
Supplies	\$ 65,038.00
Contractual	\$ 23,360.00
Equipment	\$ 0.00
Local Travel	\$ 3,000.00
Nutrition	\$ 30,000.00
Parent Services	\$ 5,390.00
Publications/Printing/Adver.	\$ 4,233.00
T/TA including Travel	\$ 32,396.00
Substitutes	\$ 50,000.00
Indirect Costs	None
TOTAL Non-Federal Share 20% Match by Grantee SFDRDCISD	\$ 579,685.00
TOTAL Federal Assistance Award	\$ 2,898,424.00

FISCAL

2018-2019

BUDGETARY EXPENDITURES

Head Start Categories	Amount \$\$
Salaries	\$ 1,587,594.09
Fringe Benefits	\$ 496,975.04
Supplies	\$ 76,989.41
Contractual	\$ 18,401.51
Equipment	\$ 11,968.00
Local Travel	\$ 1966.20
Nutrition	\$ 28,127.20
Parent Services	\$ 8,608.93
T/TA	\$ 42,813.00
Substitutes	\$ 45,295.62
Indirect Costs	\$ 0.00
TOTAL Non-Federal Share 20% Match by Grantee SFRDCISD	\$ 845,456.38
TOTAL Federal Award	\$ 2,318,739.00



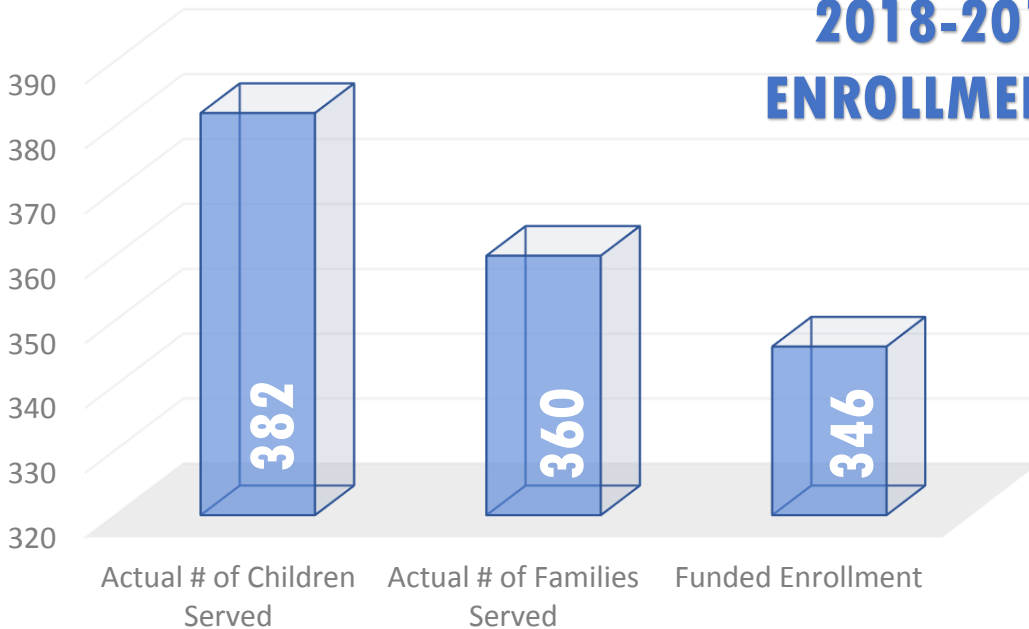
FISCAL

2019-2020

PROPOSED BUDGET

Head Start Categories	Amount \$\$
Personnel Salaries	\$ 1,594,143.00
Fringe Benefits	\$ 521,945.00
Supplies	\$ 91,500.00
Contractual	\$ 16,000.00
Equipment	\$ 15,636.00
Local Travel	\$ 3,500.00
Nutrition	\$ 30,000.00
Parent Services	\$ 8,000.00
Publications	\$ 6,000.00
T/TA including Travel	\$ 32,396.00
Training Miscellaneous	\$ 4,733.00
Substitutes	\$ 60,000.00
Indirect Costs	\$ 0.00
TOTAL Non-Federal Share 20% Match by Grantee SFRDCISD	\$ 589,802.00
TOTAL Federal Award	\$ 2,949,009.00

2018-2019 ENROLLMENT



FISCAL

Parents engage in many ways while their children are enrolled in the program. Parents participate in two home visits and two parent-teacher conferences per school year. Other activities include:

- ♥ Participating in weekly instructional planning meetings with teachers
- ♥ Program monitoring activities
- ♥ Working in classrooms and throughout the campus as a volunteer
- ♥ Attending educational parent trainings, becoming part of the Head Start Policy Council
- ♥ Working with the child's teacher and program staff to establish educational goals including School Readiness, Campus Improvement Plan, Comprehensive Needs Assessment, and LPAC Committee
- ♥ Scheduling and taking their child for health and dental services as part of the referral procedure
- ♥ Taking part in parent/child activities such as our family literacy programs, physical activities, music/art activities and Science Fair
- ♥ Attending and engaging in monthly Love and Logic parenting curriculum sessions



**FAMILY
ENGAGEMENT**



FATHERHOOD PROGRAM



Literacy Nights



FAMILY LITERACY PROGRAM